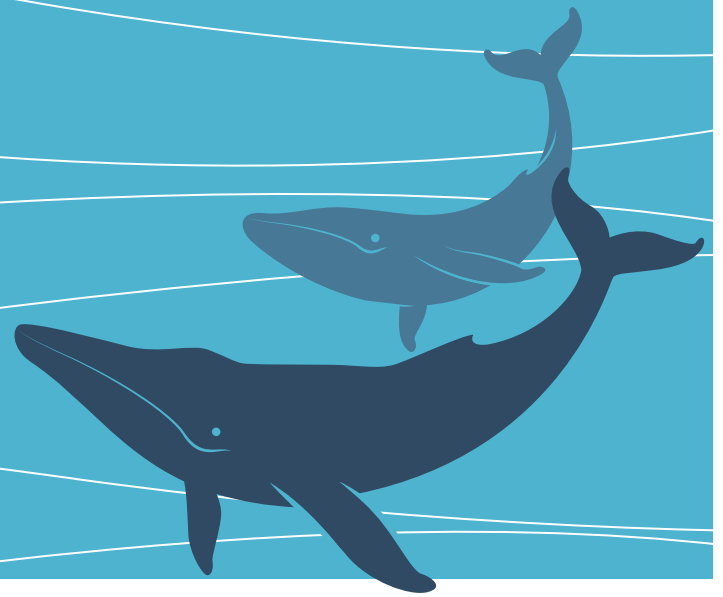


# BE WHALE AWARE



In Hawaii it is against the law to approach humpback whales closer than 100 yards by any means, or to operate an aircraft within 1000 feet of a humpback whale.

## SLOW DOWN, WHALES AROUND

- Speed increases the risk of a collision.
- Reduce vessel speed to 15 knots or less November-December and April-May.
- Reduce vessel speed to 12.5 knots or less during the peak season of January-March.
- Reduce vessel speed to 6 knots or less when within 440 yards of whales.

## APPROACHING WHALES

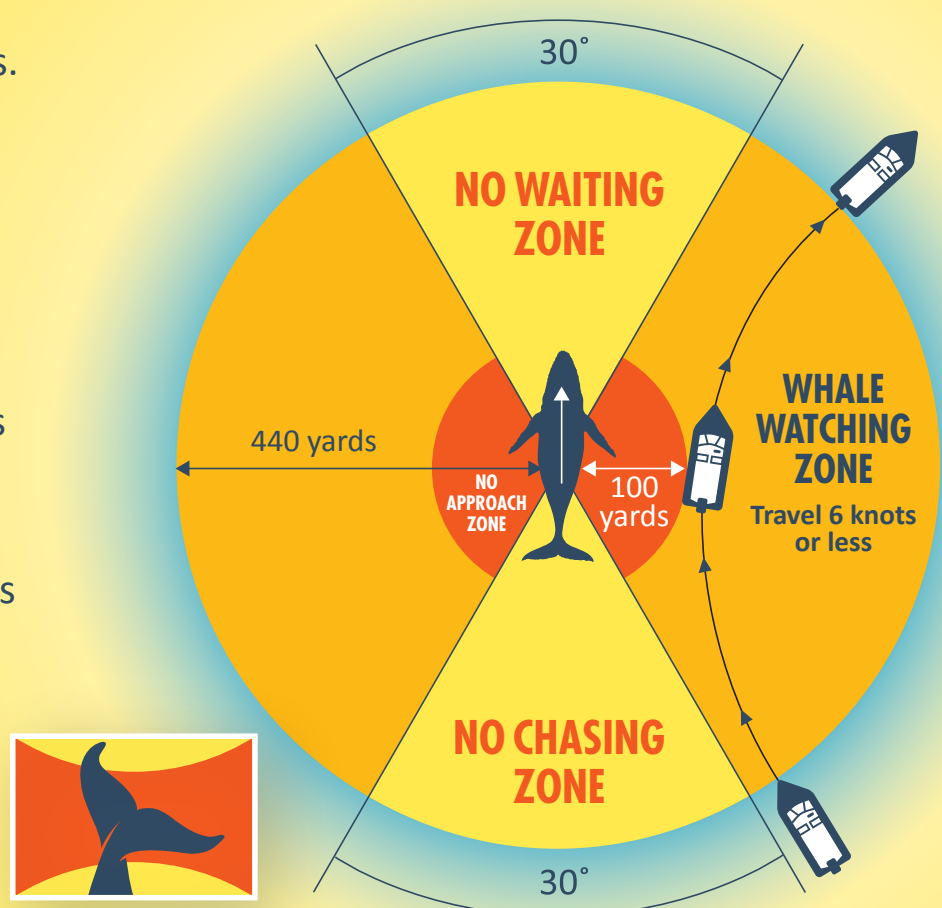
- Do not approach whales within 100 yards. If your vessel unexpectedly encounters a humpback whale within 100 yards, STOP IMMEDIATELY and allow whales to pass.
- Always stay at your helm and post an observer to spot whales while underway. Approach areas of whale activity with extreme caution and look in all directions before approaching or departing.
- Vessels should operate in a direction parallel and to the side rear of the whale's travel direction.
- Do not leap-frog ahead or cut in front of a whale's path.

## LOOK FOR THE FLAG

Vessels flying the Be Whale Aware flag are actively searching for or watching whales. Please maintain a distance of at least 100 yards.

## WATCHING WHALES

- Limit your viewing with whale groups containing calves to 30 minutes.
- No more than 3 vessels of any size or type should stop to watch a whale group.
- Do not attempt to swim with or feed whales.
- Do not place arms, head, feet, poles, or cameras in the water within 100 yards of a whale.



If a COLLISION OCCURS immediately call the National Marine Fisheries Service Marine Mammal Stranding Hotline: 1-888-256-9840

To report a VIOLATION OF THE APPROACH RULE, or other human related disturbance, call NOAA Enforcement: 1-800-853-1964



Protecting our oceans through science and advocacy

For more detailed information regarding the Be Whale Aware program, please visit [pacificwhale.org/BWA](http://pacificwhale.org/BWA)